

# **Silhouette Studio Library File Extractor Installation Guide**

**Version: V1.04**

**Issue Date: 12 November 2015**

**Author: © Ian Wadsworth 2015**

## Table of Contents

<b>1. DOCUMENT DETAILS .....</b>	<b>3</b>
1.1 Summary .....	4
1.2 Supersedes .....	4
1.3 Version History .....	4
1.4 Copyright.....	4
<b>2. SYSTEM REQUIREMENTS INFORMATION .....</b>	<b>5</b>
2.1 System Requirements.....	6
<b>3. INSTALLATION .....</b>	<b>7</b>
3.1 The Set-up Wizard .....	8

## Table of Pictures

PICTURE 1 .NET FRAMEWORK 3.5 SP1 NOT FOUND .....	8
PICTURE 2 WINDOWS USER ACCOUNT CONTROL (VISTA/WINDOWS 7/ WINDOWS 8/WINDOWS 10).....	8
PICTURE 3 SILHOUETTE STUDIO LIBRARY FILE EXTRACTOR FREE SET UP WIZARD .....	9
PICTURE 4 THE CANCEL BUTTON CLICKED .....	9
PICTURE 5 LICENCE AGREEMENT FORM.....	10
PICTURE 6 DESTINATION FOLDER .....	10
PICTURE 7 DESTINATION FOLDER DOESN'T EXIST .....	11
PICTURE 8 DESTINATION FOLDER EXISTS.....	11
PICTURE 9 START MENU FOLDER .....	11
PICTURE 10 START MENU FOLDER UNDER PROGRAMS IN WINDOWS XP.....	12
PICTURE 11 ADD A DESKTOP SHORTCUT AND QUICK LAUNCH ICON IN WINDOWS XP.....	12
PICTURE 12 READY TO INSTALL.....	13
PICTURE 13 POP-UP WHEN THE SILHOUETTE STUDIO LIBRARY FILE EXTRACTOR FREE IS RUNNING.....	13
PICTURE 14 POP-UP WHEN THE SILHOUETTE STUDIO LIBRARY FILE EXTRACTOR FREE IS RUNNING (WINDOWS 7/8.X/10) .....	14
PICTURE 15 INSTALL COMPLETE.....	14

# 1. Document Details

## 1.1 Summary

This is the release for the Set-up Silhouette Studio Library File Extractor Free installer release 1.04.

## 1.2 Supersedes

None.

## 1.3 Version History

Version	Date	Details
1.00	1 January 2015	Authors & Contributors at this version Ian Wadsworth.  First issue.

## 1.4 Copyright

This document, test files, executables and related files are copyright of Ian Wadsworth (except where indicated), and must not be distributed to any un-authorized testers without the consent of Ian Wadsworth.

## **2. System Requirements Information**

## 2.1 System Requirements

- Requires Windows XP, Windows Vista, Windows 7 or Windows 8.x.
- At least 3MB of hard disk space
- The application uses about 25MB of DRAM.
- Requires the Microsoft .NET Framework 3.5 Service Pack 1 (Requires at least Service Pack 2 Win XP), if not already installed. The installer will detect if the framework is installed or not.
  - If you have Internet access it can be downloaded from <http://www.microsoft.com/en-gb/download/details.aspx?id=25150> (about 235MB)
  - If no Internet access, it may be on the operating systems install disk.

The supplied files are (after installing): -

```
SilhouetteStudioLibraryFileExtractor.exe  
SilhouetteStudioLibraryFileExtractorUserGuide.pdf  
eula.rtf  
unins000.dat  
unins000.exe
```

# 3. Installation

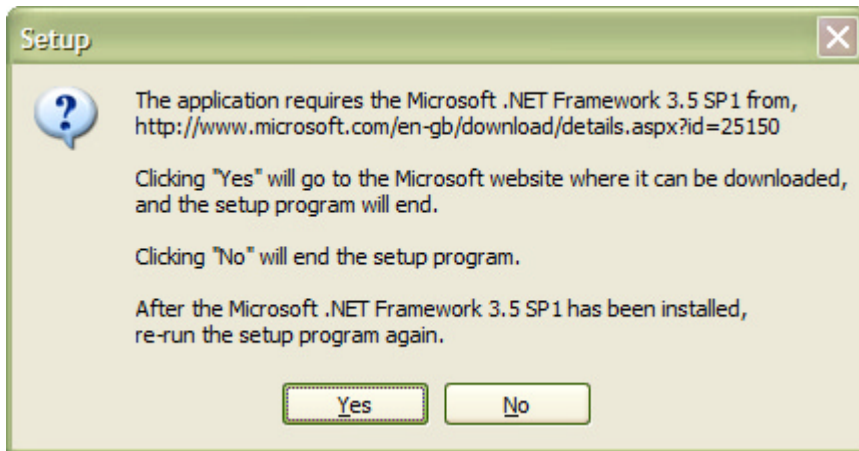
## 3.1 The Set-up Wizard

Clicking on the set-up file `SetupSilhouetteStudioLibraryFileExtractorFreeV1-0-00.exe` will launch the installer (see Picture 3 Silhouette Studio Library File Extractor Free Set Up Wizard). Depending on the Windows Operating System used, you may get the 'User Account Control' pop up (see Picture 2 Windows User Account Control (Vista/Windows 7/ Windows 8/Windows 10)), click 'Yes' to continue.

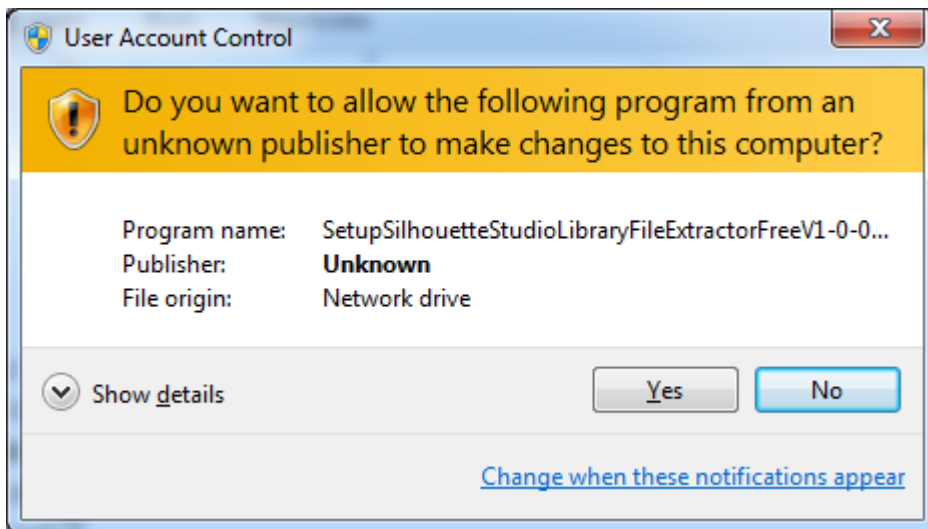
Note: the version number may to different to the one displayed.

If the required .NET framework isn't installed a pop message will be displayed see Picture 1 .NET Framework 3.5 SP1 not found. The framework will need to be installed before the installation can be re-started.

Picture 1 .NET Framework 3.5 SP1 not found



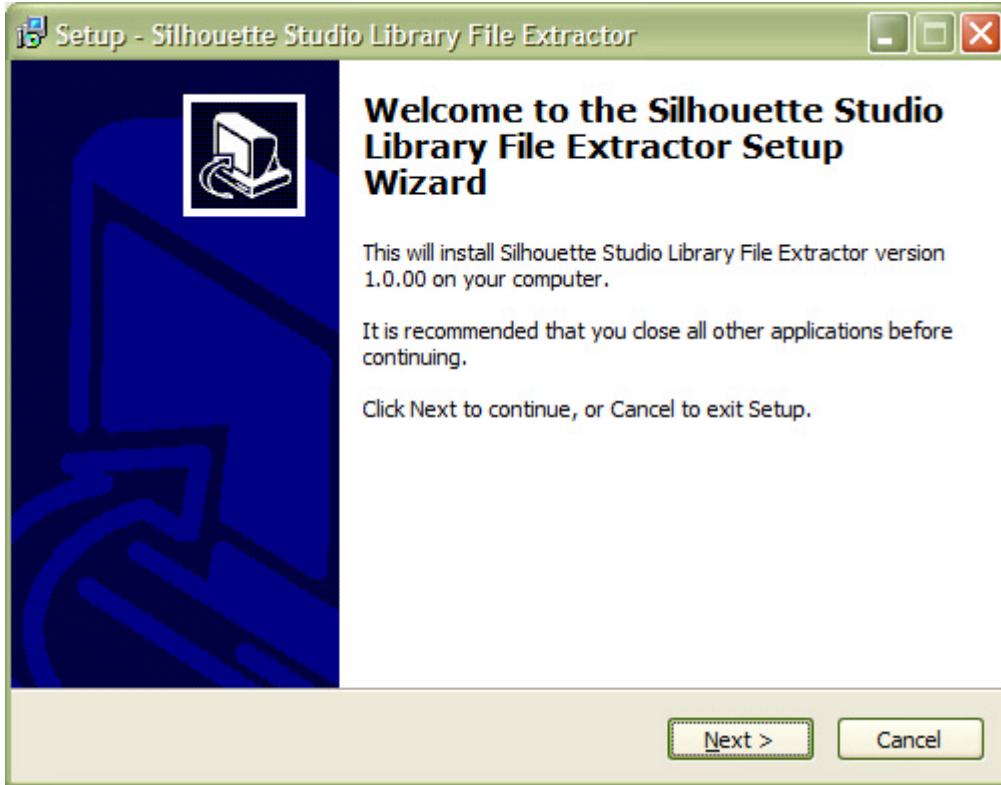
Picture 2 Windows User Account Control (Vista/Windows 7/ Windows 8/Windows 10)



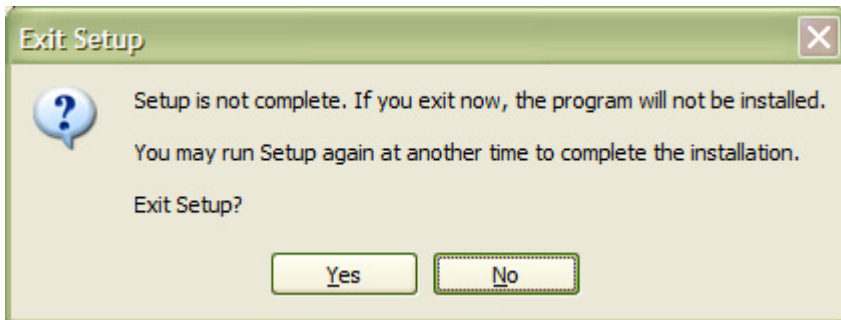
Click the 'Next' button to continue, or the 'Cancel' (see Picture 4 The Cancel Button Clicked) at anytime during the installation will stop it.



Picture 3 Silhouette Studio Library File Extractor Free Set Up Wizard

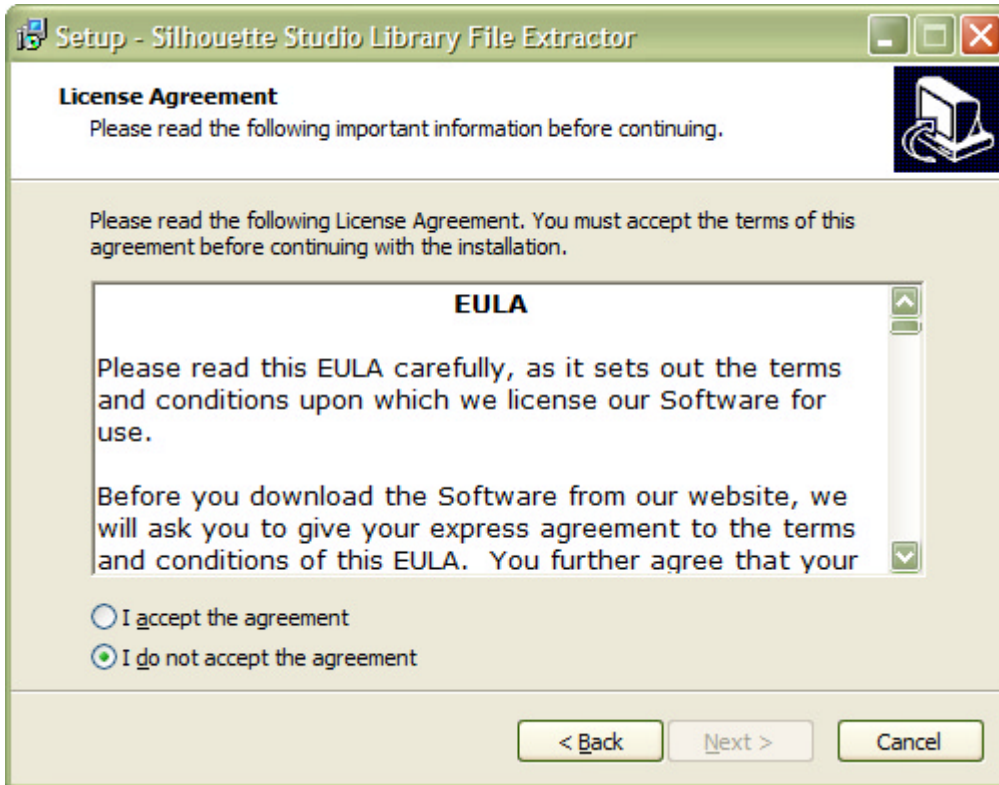


Picture 4 The Cancel Button Clicked



Read the licence agreement and either accept or reject it. If accepted, click on the 'Next' button.

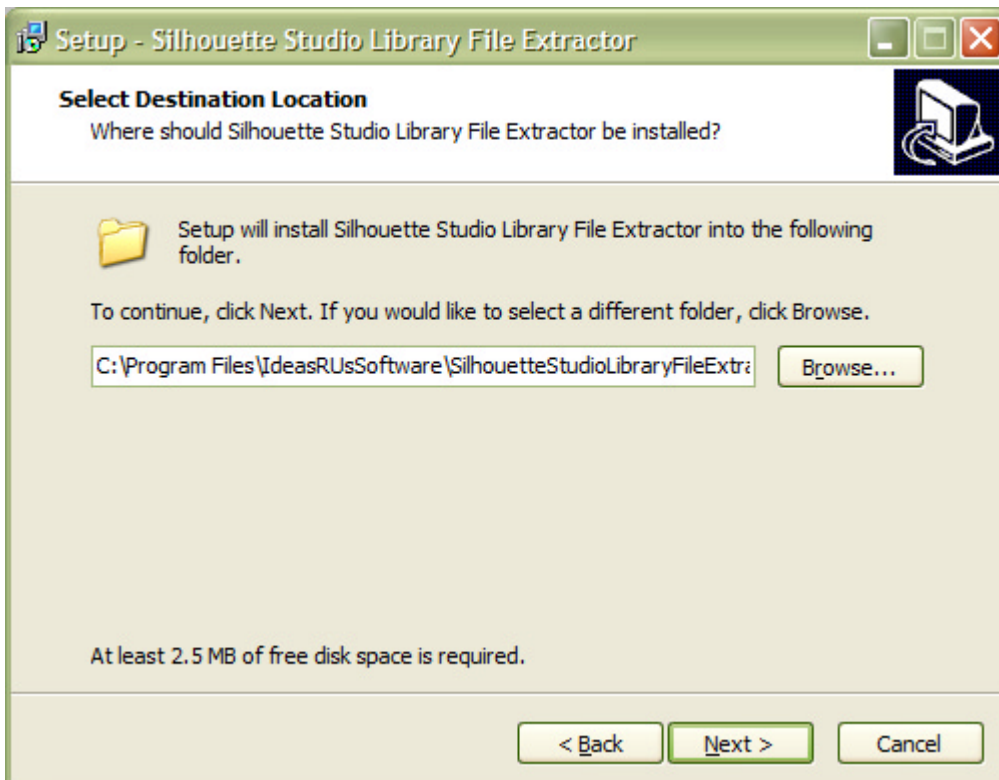
Picture 5 Licence Agreement Form



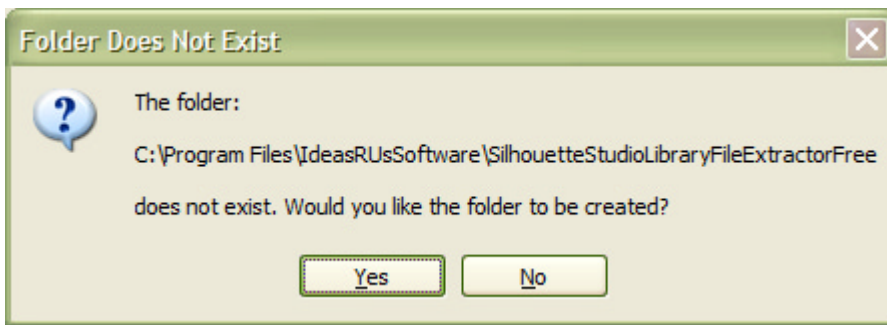
The destination folder for the installation can be changed from the default location, by clicking the 'Browse' button and selecting the new destination folder. See Picture 6 Destination Folder.

If the destination folder doesn't exist or if it already exists, there will be a pop message box asking you what to do. Click either 'Yes' or 'no'. See Picture 7 Destination Folder doesn't Exist and Picture 8 Destination Folder Exists.

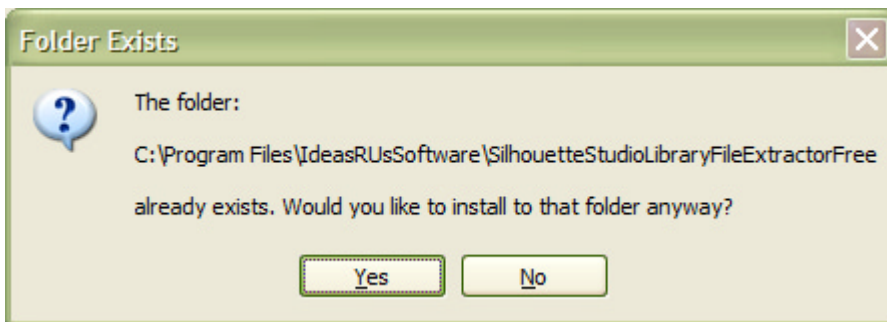
Picture 6 Destination Folder



Picture 7 Destination Folder doesn't Exist

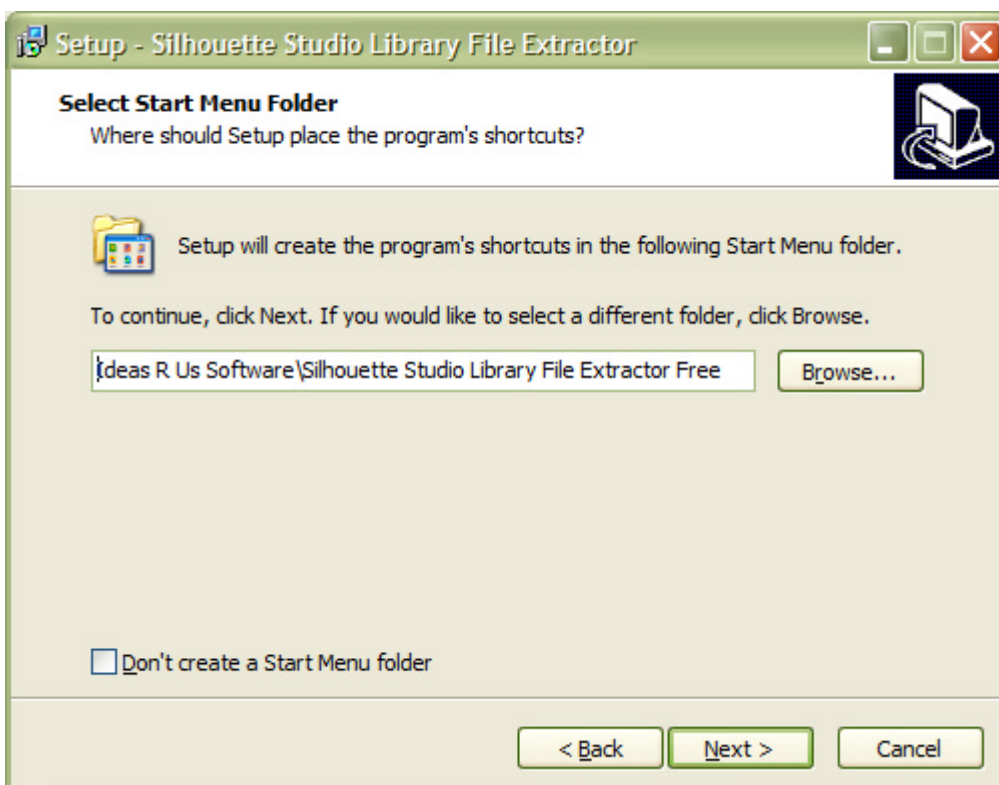


Picture 8 Destination Folder Exists



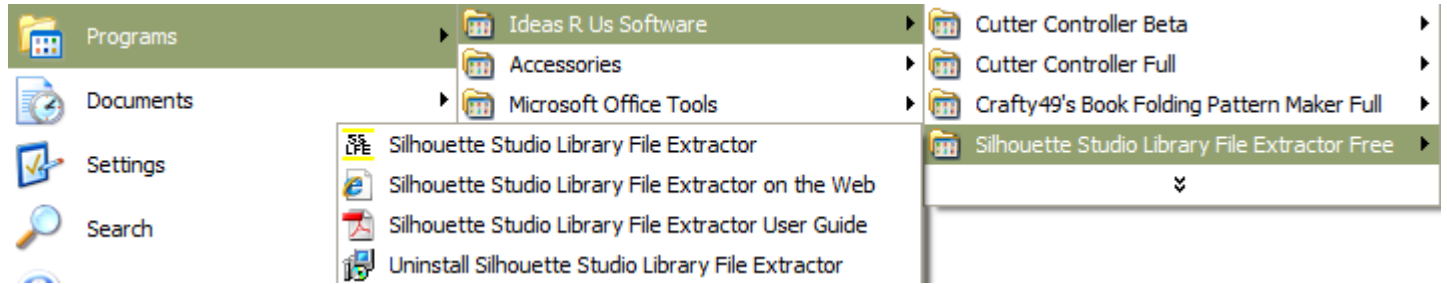
You can choose to add a Start Menu folder (see Picture 9 Start Menu Folder) to the Program's shortcut (see Picture 10 Start Menu Folder under Programs in Windows XP) that can be renamed. Windows 8.x does not have a Start Menu. Checking the 'Don't create a Start Folder Menu folder' box will not create the folder. Click the 'Next' button.

Picture 9 Start Menu Folder



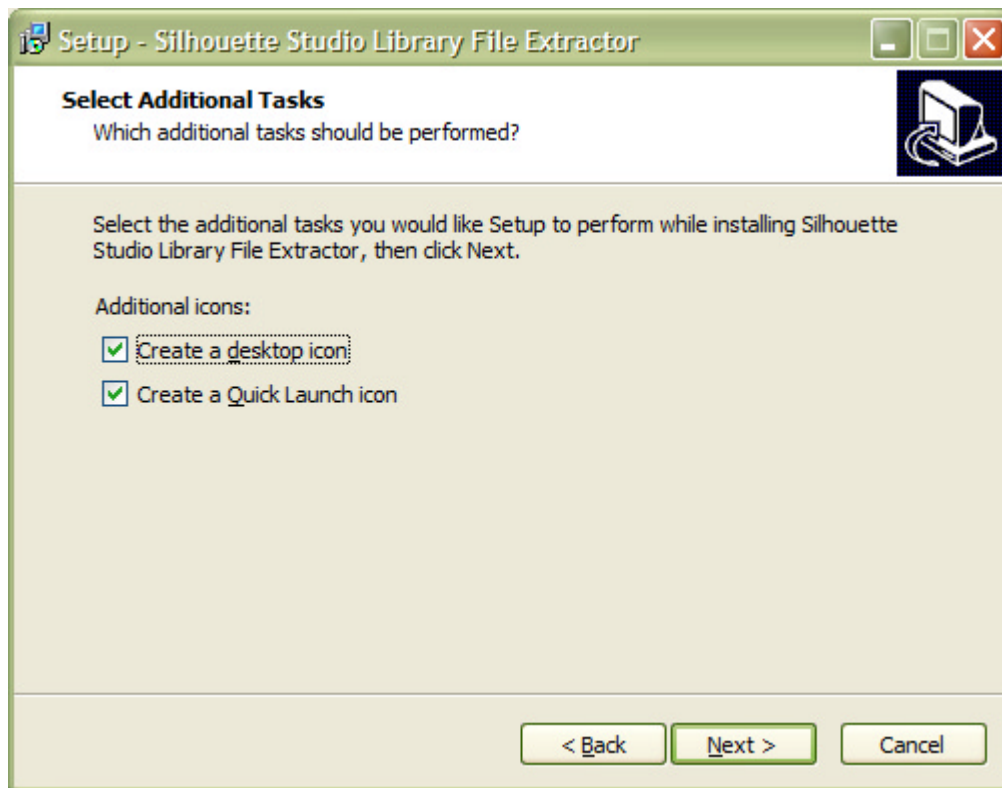
## Silhouette Studio Library File Extractor Installation Guide V1.04

Picture 10 Start Menu Folder under Programs in Windows XP



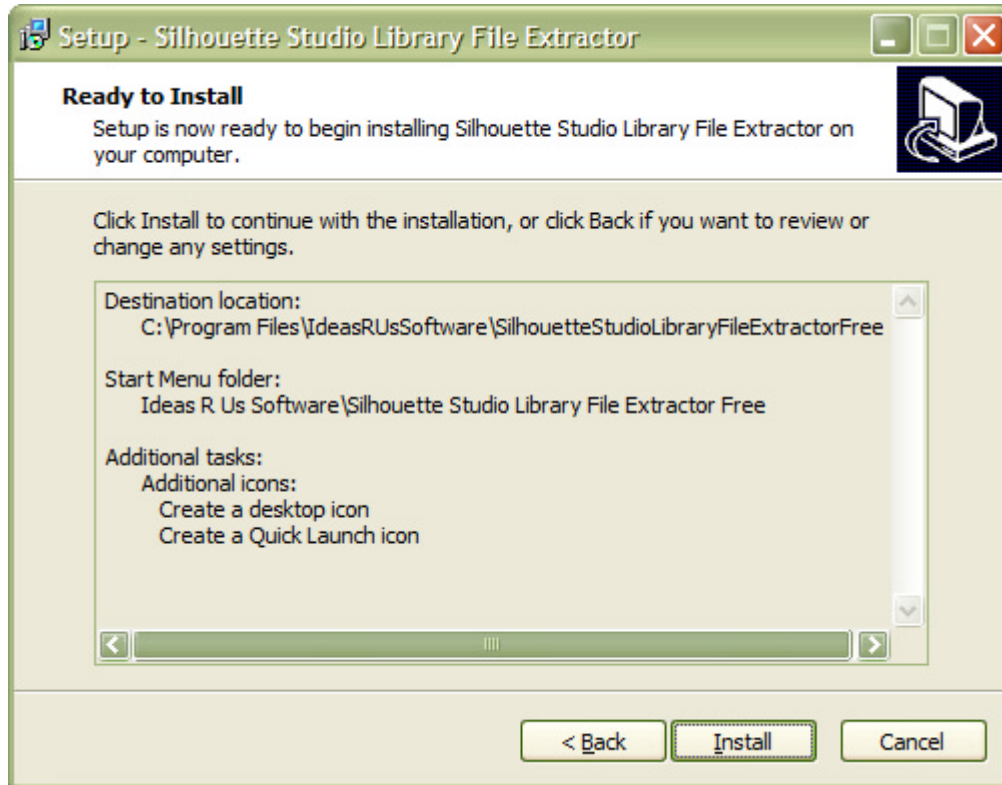
Choose to add a desktop and/or a quick launch icon (depends on the Operating System, shown for Windows XP). Click the 'Next' button.

Picture 11 Add a Desktop Shortcut and Quick Launch Icon in Windows XP



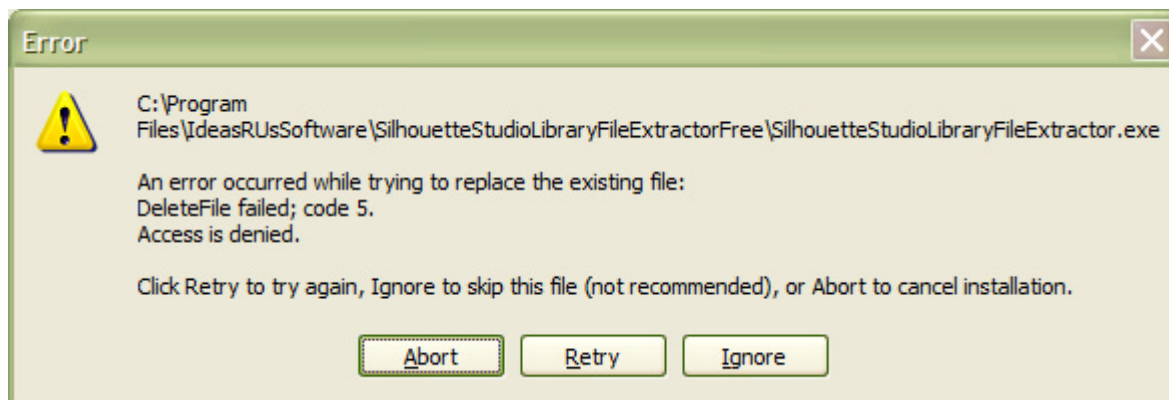
This is the last form, and the last chance to cancel the installation. Click the 'Install' button.

Picture 12 Ready to Install



The pop-up below (or similar) will be when Silhouette Studio Library File Extractor Free is running. Close the Silhouette Studio Library File Extractor Free application and click 'Retry'.

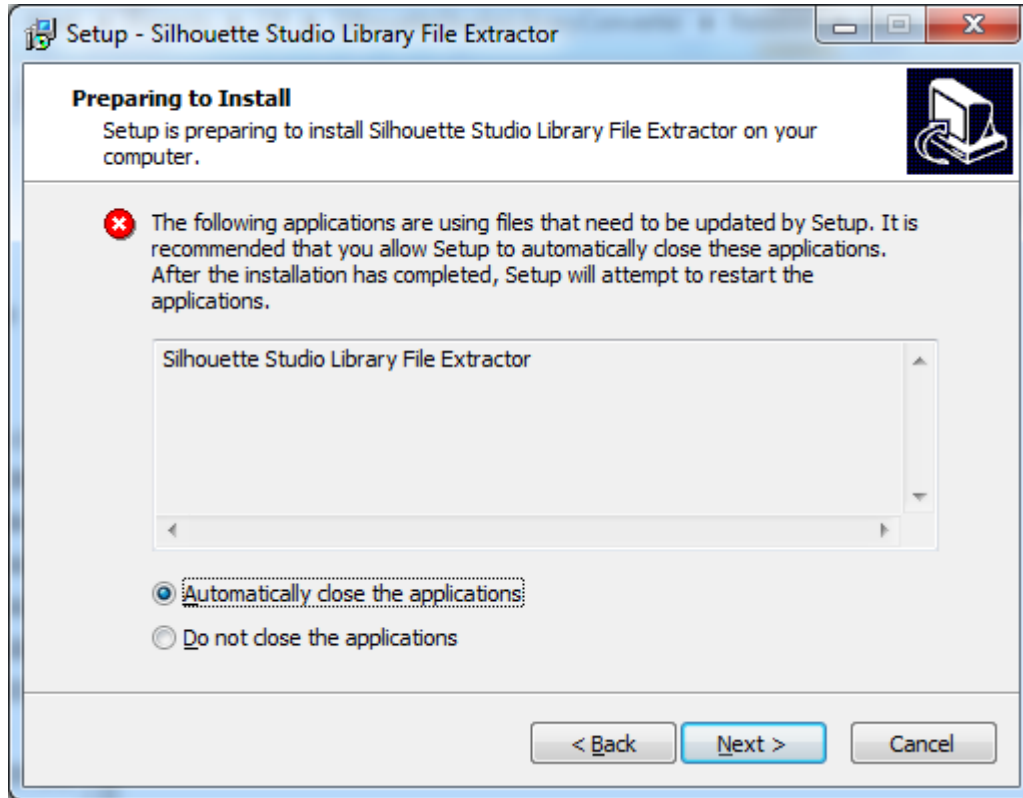
Picture 13 Pop-up when the Silhouette Studio Library File Extractor Free is running



The pop-up below (or similar) will be when Silhouette Studio Library File Extractor Free is running on Windows 7/8.x/10. Click the 'Next' button.



Picture 14 Pop-up when the Silhouette Studio Library File Extractor Free is Running (Windows 7/8.x/10)



Clicking on the 'Finish' button will launch the Silhouette Studio Library File Extractor Free application if the 'Launch Silhouette Studio Library File Extractor Free' box is checked.

Picture 15 Install Complete

